

BRAWLER[®] SOLIDFLEX HPS

SKIDSTEER

SPECS

Code	Pneumatic Tire Size	R.W. (in)	T.D. (32nds)	O.D. (in)	Width (in)	WT. (lb)	Solidflex HPS Load Capacity (lb)	Pneumatic Load Capacity (lb)
922923	31x10-20	7.50	51	31.0	10.0	170	6,190	4,140
922924	33x12-20	7.50	70	33.0	11.2	215	6,445	5,610

APPLICATIONS

- Waste Transfer Stations
- Metal Recycling
- Construction & Demolition
- Steel Mills & Foundries
- Heavy Industrial
- Quarries and Open Pit Mining
- Underground Mining



BRAWLER[®]

SOLIDFLEX HPS

SKIDSTEER

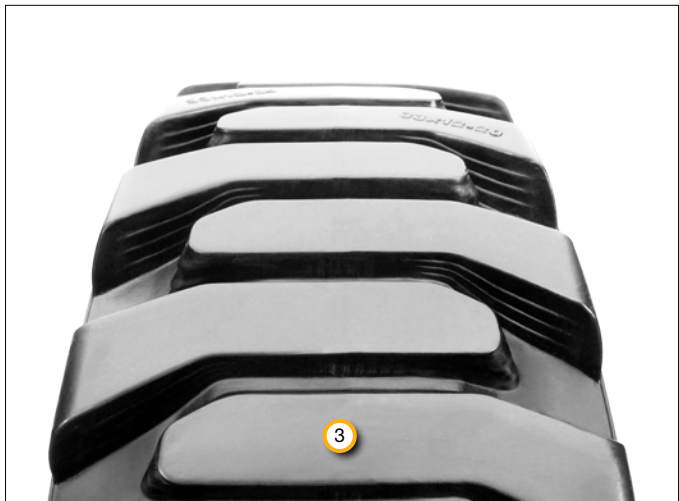
BRAWLER SOLIDFLEX HPS

The new Brawler Solidflex HPS (High Performance Solid) skid steer tires are engineered to perform in the most extreme applications from scrap metal recycling to waste transfer stations to open pit mining operations.

The Brawler Solidflex HPS features elliptical apertures to deliver unprecedented ride comfort which results in reduced equipment and operator fatigue.

FEATURES AND BENEFITS

1. Durable, cut resistant 2-stage rubber compound translates into no downtime from flats or sidewall cuts resulting in a lower cost per hour.
 - TFT rubber compound – premium mining compound for high abrasion and cut resistance.
2. Solidflex HPS tires press-on to flat based wheels.
3. Deep, lug tread pattern delivers up to 3 times more wearable rubber than regular pneumatic tires.
4. R-4 tread design provides exceptional traction.
5. Steel base rings ensure strict rim adherence.



FEATURES

- ① Solidflex HPS tires press-on to flat based wheels.
- ② Elliptical apertures provide a softer ride which reduces equipment and operator fatigue.
- ③ Premium mining rubber compound engineered for high abrasion application and superior tire life.

MAINE
INDUSTRIALTIRE