

# PERMATHANE PREMIUM PRESS-ON

## PERMA-80

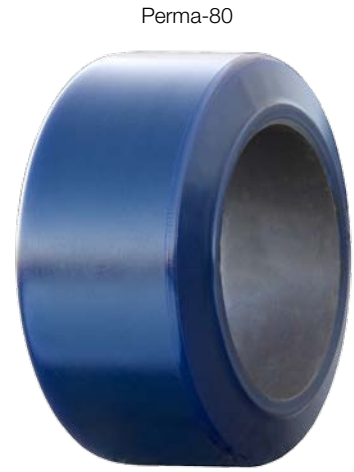
- Softest polyurethane material in the industry reduces vibration, protecting equipment and operators
- Premium poly tire specially formulated to resist wear and tear – outlasts rubber as much as 2 to 1
- Highest traction poly available for improved handling and safety
- Poly material exceeds load capacity of rubber – rated up to 54%
- Non-Marking, chemical resistant material prevents damage to finished floors

## PERMA-90

- Quality compound blends high performance and value
- All-purpose workhorse compound for use on most surfaces
- Traditional black material for toughest applications
- Non-marking

## PERMA-95 (Hiload)

- Hardest 95 durometer compound provides up to 15% greater load capacity than other polyurethane compounds
- Formulated for abrasion and chunking resistance
- Minimizes heat build-up and tire deflection
- Non-Marking and chemical resistant
- Tread surface treatments are not available on the Perma-95



Perma-80



Perma-90



Perma-95

### SIZES

9x5x5	16.25x6x11.25
10x4x6.5	18x6x121/8
10x5x6.5	18x7x121/8
13.5x5.5x8	22x12x16
13x6x10.5	28x10x22
13.5x6x10.5	28x12x22
16x5x10.5	36x10x30
16x6x10.5	36x12x30
16.25x5x11.25	

\*\*Please call for a complete listing of Polyurethane tire sizes.

\*\* Only core sizes have been listed - full size range available

### TREAD SURFACE TREATMENTS

Custom tread treatments shown below are available as Special Factory Order



**Siping:** Lateral 1/2" deep razor cuts are made 1/2" apart on smooth tread to provide extra traction on wet surfaces and inclines. Note that this treatment voids tire warranty.



**Diamond Cutting:** Criss-crossing grooves are cut into smooth tire surfaces - typically used for sweeper tires operating in very wet conditions.



**Cross Grooving:** 3/16" wide diagonal grooves are cut into smooth tire surfaces to channel out water and reduce hydroplaning.



**Grooving:** A 5/8" wide and 5/8" deep groove is cut into smooth tread tire surfaces to reduce steer tire side slipping and drive tire heat build-up.